

Union Elementary School District

Maricopa County

Efficiency peer groups 8 and T-2, Achievement peer group 13¹

Legislative district(s): 19

District size, location:

Medium, City

Students attending:

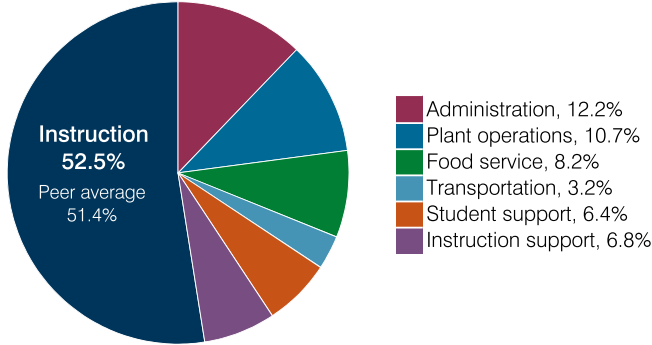
1,815

Number of schools:

3

OPERATIONAL EFFICIENCY

Spending by operational area



Efficiency measures relative to peer averages

Operational area	Measure	District	Peer average	State average
Administration	Cost per pupil	\$912	\$1,025	\$860
	Students per administrative position	79	67	66
Plant operations	Cost per square foot	\$7.24	\$6.61	\$6.34
	Square footage per student	112	143	156
Food service	Cost per meal	\$2.48	\$2.92	\$3.02
Transportation	Cost per mile	\$8.75	\$5.91	\$4.05
	Cost per rider	\$1,939	\$1,232	\$1,301

Very low Low Comparable High Very high

Per pupil spending

Spending by area	District		Peer average 2018	State average 2018
	2017	2018		
Instruction	\$ 3,808	\$ 3,936	\$ 4,392	\$ 4,480
Administration	873	912	1,025	860
Plant operations	607	808	971	988
Food service	655	614	659	425
Transportation	271	241	331	388
Student support	526	478	631	693
Instruction support	446	509	546	462
Total operational	7,186	7,498	8,555	8,296
Land and buildings	713	201	1,140	827
Equipment	285	1,053	697	409
Interest	64	91	327	228
Other	1	0	172	169
Total nonoperational	1,063	1,345	2,336	1,633
Total per pupil spending	\$ 8,249	\$ 8,843	\$ 10,891	\$ 9,929

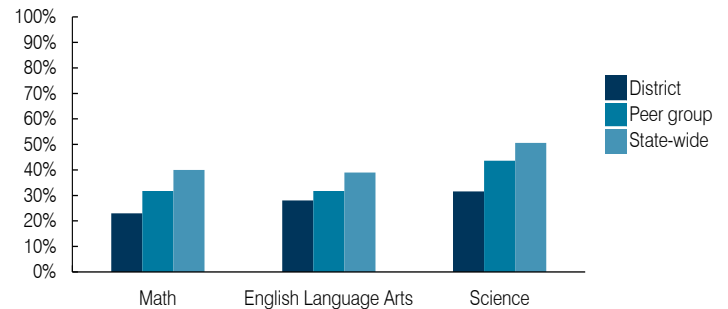
STUDENT ACHIEVEMENT, STUDENT AND TEACHER MEASURES, AND REVENUES

ADE-assigned school letter grades

Grade	Number of schools ²	Percentage of schools
A	0	0%
B	0	0%
C	2	100%
D	0	0%
F	0	0%

² Excludes schools for which letter grades were not published by ADE. See Appendix B for more information.

Students who passed State assessments



Student and teacher measures

Measure	District	Peer average	State average
Attendance rate	94%	94%	94%
Graduation rate (2017)	N/A	N/A	N/A
Poverty rate (2017)	20%	20%	19%
Special education population	12%	13%	12%
Students per teacher	20.6	19.4	18.4
Average teacher salary	\$42,780	\$45,518	\$48,951
Amount from Prop 301	\$4,501	\$5,403	\$6,411
Average years of teacher experience	3.7	7.7	11.4
Percentage of teachers in first 3 years	67%	35%	19%

Per pupil revenues

Revenues by source	District		Peer average 2018	State average 2018
	2017	2018		
Federal	\$ 1,402	\$ 1,181	\$ 1,723	\$ 1,317
State	4,683	4,619	3,921	4,011
Local	2,142	2,116	4,869	4,592
Total per pupil revenues	\$ 8,227	\$ 7,916	\$ 10,513	\$ 9,920

Select revenues from common sources

Equalization formula funding	\$ 5,303	\$ 5,184	\$ 5,175	\$ 5,585
Grants	1,402	1,182	1,843	1,241
Donations and tax credits	17	22	54	90

Select revenues from less common sources

			Number of peers receiving
Desegregation	\$ 0	\$ 0	4 of 19
Small school adjustment	0	0	0 of 19
Federal impact aid	0	0	0 of 19
Voter-approved levy increases	892	922	19 of 19

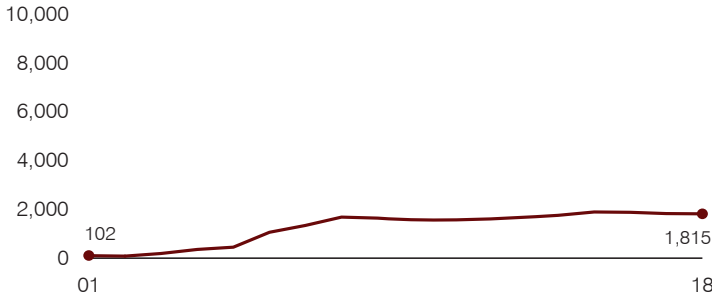
¹ See Appendix A for information such as districts included in each peer group and Appendix B for sources and methodology.

Instructional spending percentage

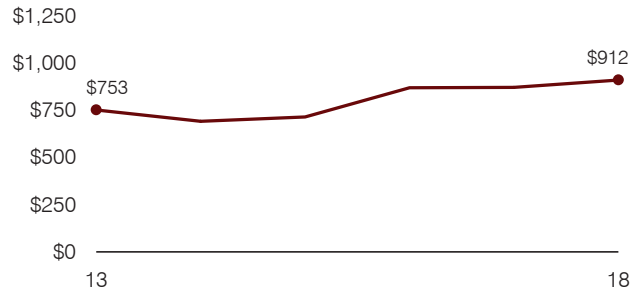
Year: 2001 2002 2003 2004 2005 2006 2007 2008 2009 2010 2011 2012 2013 2014 2015 2016 2017 2018
 Percentage: 51.5 46.9 47.4 50.2 49.6 50.1 55.6 55.0 56.3 54.0 50.4 53.8 51.4 52.5 52.3 51.0 53.0 52.5

TRENDS AND FINANCIAL STRESS ASSESSMENT
 Fiscal years as indicated

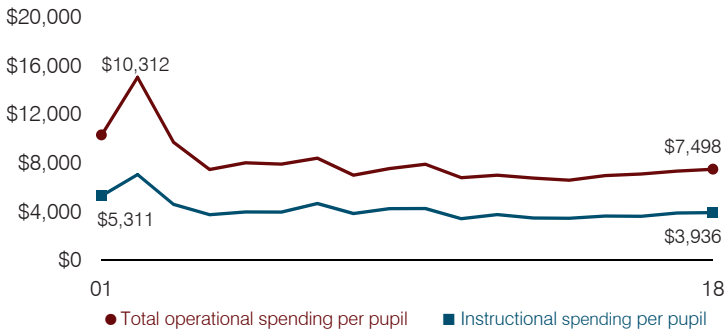
Students attending



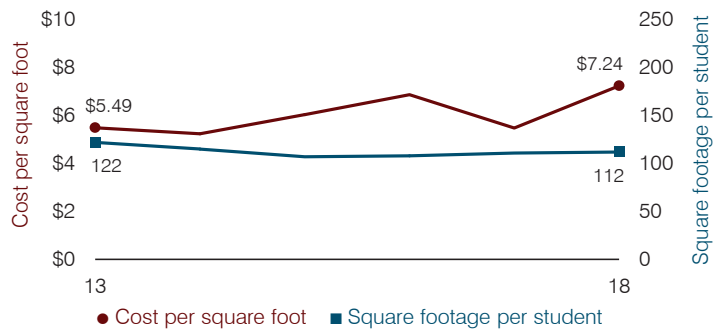
Administrative cost per pupil



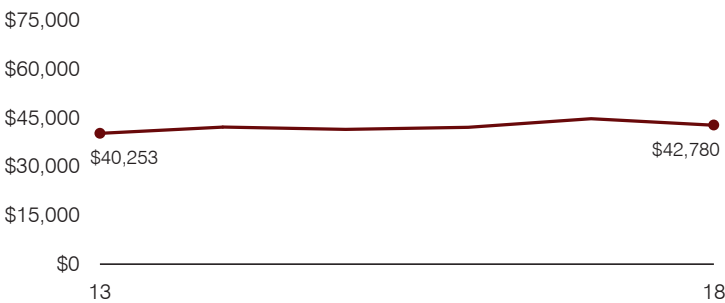
Total operational and instructional spending per pupil (inflation adjusted to 2018 dollars)



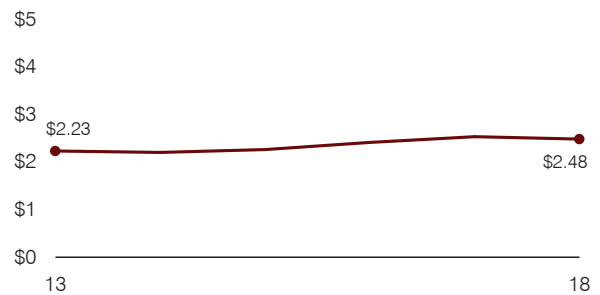
Plant cost per square foot and square footage per student



Average teacher salary



Food service cost per meal



Financial stress assessment

Overall financial stress level: **Low**

Measure: 2016 through 2018	Assessment
Change in number of district students	Moderate decrease
Spending exceeded operating/capital budgets	No overspending
Spending increase election results	Voter-approved
Operating reserve percentage, Trend	6.9%, Varying
Years of capital reserve held	More than 3 years
Current financial and internal control status	Compliant

Low **Moderate** **High**

Transportation costs per mile and per rider

